

Besson

2022/23

OLYMPIC CHAMPION PRO

BRAND
BORN ON
THE PODIUM
OF THE
MOUNTAIN.



Besson

hiTEX[®] 20.000



SUPERB WATERPROOFNESS: W/P 20 000 mm/H2O
HIGH MOISTURE PERMEABILITY: 20 000 g/m2/24h
EXTREMELY DURABLE WATER REPELLENCY (DWR): 80
POINTS AFTER 100 WASH CYCLES
COLORS WITH HIGH UV RESISTANCE GRADE:4

#01 BLK Black	#02 WHT White	#03 RED Red	#04 ORG Orange	#07 FLU Fluo Green	#05 NBL Nautical Blue	#06 DRB Dresden Blue
------------------	------------------	----------------	-------------------	-----------------------	--------------------------	-------------------------

hiTEX[®] NYLON SOFT TAFFETA

HIGH WATERPROOFNESS: W/P 10 000 mm/H2O
+ 10 000 g/m2/24h
LOW MOISTURE RETENTION RATING - UV RESISTANT

#01 BLK Black	#02 WHT White	#03 RED Red	#05 NBL Nautical Blue
------------------	------------------	----------------	--------------------------

twintex[®] SUPERSTRETCH

FACE SIDE: SUPERSTRETCH WOVEN FABRIC: 94% PES +
38% PA + 14% EA + 4% PU 514 gr/m2
INSIDE: PU BREATHABLE LAMINATION: W/P 20 000
mm/H2O + 20 000 g/m2/24h

#01 BLK Black	#02 WHT White	#03 RED Red	#05 NBL Nautical Blue
------------------	------------------	----------------	--------------------------

twintex[®] 3PLY SOFT SHELL

FACE SIDE: POLYESTER STRETCH WOVEN FABRIC: 94%
PES + 6% SPANDEX 350/270 gr/m2
INSIDE: PU BREATHABLE LAMINATION: W/P 10 000
mm/H2O + 10 000 g/m2/24h

#01 BLK Black	#02 WHT White	#03 RED Red	#05 NBL Nautical Blue
------------------	------------------	----------------	--------------------------

TECHNOLOGIES

SPORTHERM TECHNICAL PADDING

Sporttherm by VALTHERM is a technical padding that ensures an excellent breathability and thermal insulation. Garments made with Valtherm wadding are warm, soft and practical offering wearers comfort and freedom of movement.

Wadding manufactured according our certified quality management system to ISO 9001 and supplied in high standardized quality.

TECHNICAL CHARACTERISTICS

100% Polyester fibers

Basis Weight: g/m² 80 + 200



ANALLERGIC



BREATHABLE



CONFORTABLE



LIGHTWEIGHT



EXCELLENT WARMTH



ANIMAL FREE



SEAMS TAPING

HEATED POLYURETHANE TAPE COVERING THE STITCHED SEAMS

- SPECIALIZED ADHESIVE MACHINE APPLIES SOFT TAPE TO SEAMS
- THE STITCHES HOLES ARE COMPLETELY BACKED UP
- PREVENTS WATER PENETRATION IN ANY AREA

LASER CUTTING

HIGH-INTENSITY LASER BEAM CUTS FABRICS WITH GREAT PRECISION AND SEALS THE EDGES

- THE MOST UP-TO-DATE METHOD OF FABRICS CUTTING
- LASER HEATS FOCUSED SPOTS AND WELDS IN PRE-DEFINED AREAS
- PRECISE CUTS OF ANY SIZE AND SHAPE
- NO FRAYING EDGES OR LOOSE FIBERS

LENIGHT REGULATION SYSTEM

JUNIOR'S SIZE ADJUSTMENT SYSTEM

- MAKES THE APPAREL FIT FOR MORE THAN ONE SEASON
- SLEEVES AND LEGS CAN BE ADJUSTED AS NEEDED
- ADDS UP MORE THAN 10 CM EXTRA HEIGHT

SEAMLESS ASSEMBLING

SEAMLESS CONNECTION BY ADHRSIVE FILM REPLACES STITCHED SRAMS IN CRITICAL AREAS

- ENHANCED DESIGN AND EFFICIENCY
- TOP WATERPROOFNESS
- EXCELLING PULLING STRENGTH AND WASHING DURABILITY
- SEAMLESS LOOK BY HIGH-END TECHNOLOGY

SILVER PRINT



ELASTIC EYELET FOR THE
TELEPHONE CABLE

INNER COLLAR IN ABRASION-RESISTANT WARM FABRIC,
DETACHABLE TO BE WASHED SEPARATELY

MAGNETIC CLOSING SYSTEM
ON THE WIND PROTECTION LIST

GLASSES CLEANER JOINED BY
ELASTIC TO THE INTERNAL POCKET



AIR VENTILATION CHANNEL
TO EXPEL INTERNAL STEAM EXCESS

MESH PHONE POCKET WITH
ZIP CLOSURE

IDENTITY TAG

TEAM.....

NAME.....

PHONE.....

TECHNICAL WARM FABRIC TO
PROTECT THE LUMBAR AREA

DETACHABLE INTERNAL CUFF WITH RUBBER BORDER
FOR BEST WIND, COLD AND SNOW PROTECTION

ELASTIC STRING FOR BOTTOM REGULATION

SILVER PRINT WITH JACKET FEATURES

HIGHLY WATERPROOF		HIGH % OF RECYCLED PES	
MODULATED HEAT SYSTEM		TOP UV RESISTANCE	
EXCELLENTLY BREATHABLE		STRETCH AREAS FOR COMFORT	
CRUCIAL TAPED SEAMS		DURABLE AND RESISTANT	

MESH INTERNAL POCKET
WITH LYCRA BORDER

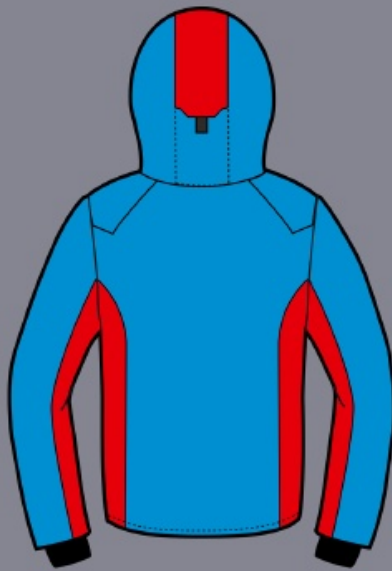


START UP



TWMJ05S (man)
TWWJ05S (woman)
TWJJ05S (junior)
CERVINIA JACKET

TEX 1 Hitex
TEX 2 Hitex
NECK Microfleece
PADDING Sportherm 200gr



-  HIGHLY WATERPROOF
-  HIGHLY WINDPROOF
-  HIGH UV RESISTANCE
-  VERY BREATHABLE
-  LIGHT WEIGHT
-  SNUG AND COMFORT

Features: detachable hood, air ventilation under arms, skipass pocket, regulation on cuffs, cuffs with holes for thumbs, two internal big utility pockets, protection cover zip on front, internal detachable elastic cuff for snow and wind protection, detachable neck for easy washing, ergonomic shape for maximum comfort, lumbar warm zone on inside that combines optimal perspiration with thermal protection of the muscles.



DRESDEN BLUE
RED



FLUO GREEN
BLACK



available in three different fabrics and customizable in all color combinations!

TWMJ07S (man)
TWWJ07S (woman)
TWJJ07S (junior)
CERVINIA DOUDOUNNE

TEX 1 Hitex
TEX 2 Hitex
NECK Microfleece
PADDING Sportherm 200gr



-  HIGHLY WATERPROOF
-  HIGHLY WINDPROOF
-  HIGH UV RESISTANCE
-  VERY BREATHABLE
-  LIGHT WEIGHT
-  SNUG AND COMFORT

Features: detachable hood, air ventilation under arms, skipass pocket, regulation on cuffs, cuffs with holes for thumbs, two internal big utility pockets, protection cover zip on front, internal detachable elastic cuff for snow and wind protection, detachable neck for easy washing, ergonomic shape for maximum comfort, lumbar warm zone on inside that combines optimal perspiration with thermal protection of the muscles.



RED-WHITE



FLUO GREEN
BLACK



available in three different fabrics and customizable in all color combinations!

TWMJ06 (man) TWWJ06 (woman) TWJJ06 (junior) MASTER JACKET

TEX 1 Hitex
TEX 2 Hitex
TEX 2 Hitex
NECK Microfleece
PADDING Sporttherm 200gr



Features: detachable hood, air ventilation under arms, skipass pocket, regulation on cuffs, cuffs with holes for thumbs, pocket on back for gloves, two internal big utility pockets, protection cover zip on front, internal detachable elastic cuff for snow and wind protection, detachable neck for easy washing, ergonomic shape for maximum comfort, lumbar warm zone on inside that combines optimal perspiration with thermal protection of the muscles.



RED
NAUTICAL BLUE-WHITE-WHITE PIPING



DRESDEN BLUE
BLACK-WHITE PIPING



available in three different fabrics and customizable in all color combinations!

TWMJ08 (man) TWWJ08 (woman) TWJJ08 (junior) MASTER DOUDOUNNE

TEX 1 Hitex
TEX 2 Hitex
TEX 2 Hitex
NECK Microfleece
PADDING Sporttherm 200gr



Features: detachable hood, air ventilation under arms, skipass pocket, regulation on cuffs, cuffs with holes for thumbs, two internal big utility pockets, protection cover zip on front, internal detachable elastic cuff for snow and wind protection, detachable neck for easy washing, ergonomic shape for maximum comfort, lumbar warm zone on inside that combines optimal perspiration with thermal protection of the muscles.



RED
DRESDEN BLUE-WHITE



NAUTICAL BLUE
RED



available in three different fabrics and customizable in all color combinations!

TWUJ01 (unisex) TWJJ01 (junior) PIOGGIA RAIN COAT

TEX 1 Hitex
NECK Microfleece
PADDING No padding



RED



NAUTICAL BLUE



available in three different fabrics and customizable in all color combinations!

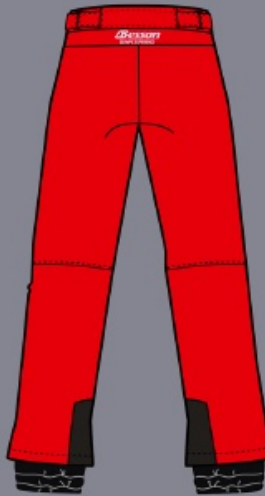
- HIGHLY WATERPROOF
- HIGHLY WINDPROOF
- HIGH UV RESISTANCE
- VERY BREATHABLE
- LIGHT WEIGHT
- SNUG AND COMFORT

Features: very comfortable and useful to protect from rain and cold, easy to use and very functional with the bottom adjustable by internal snaps, two pockets, regulation on wrists, wind protection on front, regulation string on hood.

ADJUSTABLE

TWMP05S (man) TWWP05S (woman) TWJP05S (junior) CERVINIA SET PANT

TEX 1 Hitex
TEX 2 Hitex
LINING Polyester
PADDING Sportherm 120 gr compressed



RED



OPTIONAL SUSPENDERS



available in three different fabrics and customizable in all color combinations!

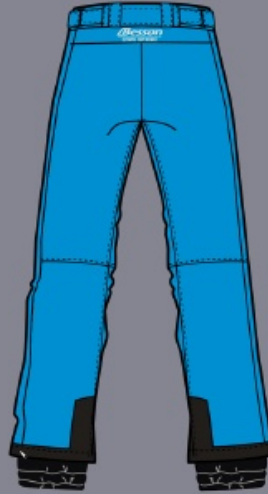
- HIGHLY WATERPROOF
- HIGHLY WINDPROOF
- HIGH UV RESISTANCE
- VERY BREATHABLE
- LIGHT WEIGHT
- SNUG AND COMFORT

Features: external waist band regulation with velcro, loop for eventual belt on waist, elastic cuffs on bottom, two pockets, zip side opening on bottom, reinforcement fabric on bottom, ergonomic shape.

TWMP05 (man) TWWP05 (woman) CERVINIA PANT

TEX 1 Hitex
TEX 2 Hitex
LINING Polyester
PADDING Spartherm 120 gr compressed

- HIGHLY WATERPROOF
- HIGHLY WINDPROOF
- HIGH UV RESISTANCE
- VERY BREATHABLE
- LIGHT WEIGHT
- SNUG AND COMFORT



DRESDEN BLUE

Features: detachable suspenders with protection bib, external waist band regulation with velcro, loop for eventual belt on waist, elastic cuffs on bottom, two pockets, zip side opening on bottom, reinforcement fabric on bottom, ergonomic shape.

TWJP03 (junior) CERVINIA PANT FULL ZIP

TEX 1 Hitex
TEX 2 Hitex
LINING Polyester
PADDING Spartherm 120 gr compressed



available in three different fabrics and customizable in all color combinations!



RED-WHITE

FULL ZIP

TWMP06 (man) TWWP06 (woman) TWJP06 (junior) FREERIDE PANT

TEX 1 Hitex
TEX 2 Hitex
LINING Polyester
PADDING Spartherm 120 gr compressed

- HIGHLY WATERPROOF
- HIGHLY WINDPROOF
- HIGH UV RESISTANCE
- VERY BREATHABLE
- LIGHT WEIGHT
- SNUG AND COMFORT



RED



BLACK

Features: detachable waistband, external waist band regulation with velcro, loop for eventual belt on waist, air ventilaton opening on internal legs, elastic cuffs on bottom, two pockets + two cargo pockets on legs, zip side opening on bottom, reinforcement fabric on bottom, ergonomic shape.



available in three different fabrics and customizable in all color combinations!

TWMP20 (unisex) COACH PANT

TEX 1 Hitex
TEX 2 Hitex
LINING Polyester
PADDING Sportherm 120 gr compressed

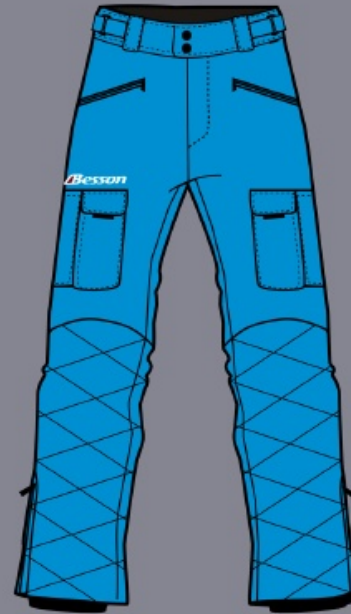
-  HIGHLY WATERPROOF
-  HIGHLY WINDPROOF
-  HIGH UV RESISTANCE
-  VERY BREATHABLE
-  LIGHT WEIGHT
-  SNUG AND COMFORT

NEW!

Features: external waist band regulation with velcro, loop for eventual belt on waist, elastic cuffs on bottom, two pockets + functional cargo pockets on legs, reinforcement padded zone on front legs, zip side opening on bottom, reinforcement fabric on bottom, ergonomic shape.



BLACK



DRESDEN BLUE



available in three different fabrics and customizable in all color combinations!

BLMJ08 (man) BLWJ08 (woman) BLJJ08 (junior) ASPEN MIX

TEX 1 Hitex Taffeta
TEX 2 Twintex Stretch
LINING Polyester
PADDING Sportherm 120gr

-  HIGHLY WATERPROOF
-  HIGHLY WINDPROOF
-  HIGH UV RESISTANCE
-  VERY BREATHABLE
-  LIGHT WEIGHT
-  SNUG AND COMFORT

hitEX
NYLON SOFT TAFFETA
twintex
- 3PLY SOFT SHELL
- SUPERSTRETCH

Features: two pockets + skipass pocket, soft touch fabric, stretch sleeves for maximum comfort, lycra borders, wind stopper internal band, chin protection, comfortable shape, high wind and cold protection with low weight.



NAUTICAL BLUE



RED



WHITE



available with sleeves in 3PLY or Superstretch customizable in all color combinations!

TWMR02 (man)
TWWR02 (woman)
TWJR02 (junior)
ASPEN SOFTSHELL

TEX 1 Twintex Stretch
LINING No lining
PADDING No padding



twintex
3PLY SOFT SHELL

Features: Stretch shell Jacket with high waterproof value and great breathability, perfect for skiing easily in temperatures above 0°; two pockets + skipass pocket, internal wind protection on front zippers, chin protection, ergonomic shape, lycra borders.



RED
NAUTICAL BLUE BORDERS



NAUTICAL BLUE
RED BORDERS



customizable with 4
color combinations!

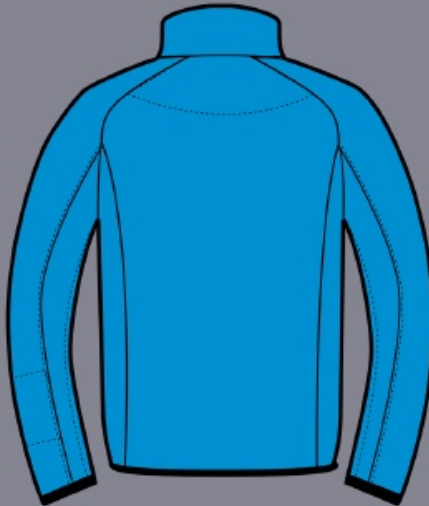
TWMR07 (man)
TWWR07 (woman)
TWJR07 (junior)
ASPEN SUPERSTRETCH

TEX 1 Twintex Superstretch
LINING No lining
PADDING No padding



twintex
SUPERSTRETCH

Features: Stretch shell Jacket with high waterproof value and great breathability, perfect for skiing easily in temperatures above 0°; two pockets + skipass pocket, internal wind protection on front zippers, chin protection, ergonomic shape, lycra borders.



DRESDEN BLUE
NAUTICAL BLUE BORDERS



RED
BLACK BORDERS



customizable with 4
color combinations!

BLMJ12 (man)
BLWJ12 (woman)
BLJJ12 (junior)
ASPEN POLY

TEX 1 Hitex Taffeta
TEX 2 Hitex Taffeta
LINING Polyester
PADDING Sportherm 120 gr



HIGHLY
WATERPROOF



HIGHLY
WINDPROOF



HIGH UV
RESISTANCE



VERY
BREATHABLE



LIGHT
WEIGHT



SNUG AND
COMFORT

hiTEX
NYLON SOFT TAFFETA

Features: two pockets + skipass pocket, soft touch fabric, lycra borders, wind stopper internal band, chin protection, comfortable shape, high protection with low weight.



NAUTICAL BLUE

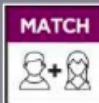


customizable with 4
color combinations!

TWUA02 (unisex)
TOKIO SWEATSHIRT
TWJA01 (junior)
COLORADO SWEATSHIRT

NEW!

TEX 1 60% Cotton - 10% Polyester 320 gr/mq
LINING No lining
PADDING No padding



MATCH



Regular Fit

**BIG
SIZE**

Features: Hooded fleece with white regulation cord on hood and metal eyelet, raglan sleeves, kangaroo pockets on front, cuffs in elasticated rib.



NAUTICAL BLUE



Besson

OLYMPIC CHAMPION PRO

GEAR UP



TWUA02 FIS (unisex)
 TWUA03 NO PROTECTION (unisex)
 TWUA04 PROTECTION (unisex)
 TWJA02 FIS (junior)
 TWJA03 NO PROTECTION (junior)
 TWJA04 PROTECTION (junior)
RACING SUIT

twintex



NEW!

*full colors
 sublimatic print
 with customized
 graphic and style!*

JUST GRAPHIC AND COLOR SAMPLES

TWUA08(unisex)
Polar Sublimatic Fleece

TEX I Twintex 400 gr
LINING No lining
PADDING No padding

NEW!

*full colors
 sublimatic print
 with customized
 graphic and style!*

Features: This special sweatshirt is made of brushed polyester end, in addition to being warm and comfortable, it offers the possibility of printing any graphic motif or texture according to the requests or the context in which it is inserted, with a very solid and durable sublimation printing system.



TWUR08 (unisex)
 TWJR08 (junior)
CANADA SHORT

TEX I Twintex (3PLY or Superstretch)
LINING No lining
PADDING No padding

twintex
 3PLY SOFT SHELL
twintex
 SUPERSTRETCH



BLACK



**RISE
ABOVE YOURSELF**

NORWAY

TEX 1 Hitex Nylon (5.000 mm)
TEX 2 Lycra Borders
PLUS Ventilation Mask
PADDING Technodown Synth 150gr

-  HIGHLY WATERPROOF
-  HIGHLY WINDPROOF
-  TOP UV RESISTANCE
-  VERY BREATHABLE
-  LIGHT WEIGHT
-  SNUG AND COMFORT
-  REALLY EASY CARE

hiTEX

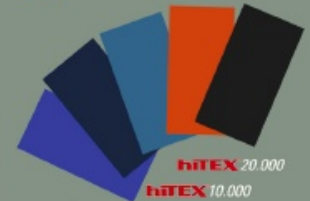
Ispirato agli anni '90, Norway rappresenta il Fashion & Hi-Tech Italiano e Francese. Il tessuto Hitex ed il peso dell'imbottitura conferiscono al capo una protezione termica ottimale.



ELECTRICAL BLUE



ORANGE



available in three different fabrics and customizable in all color combinations!



BLUE MOON



BLUE NAVY



BLACK

FINLAND

TEX 1 Hitex Nylon (5.000 mm)
TEX 2 Lycra Borders
PLUS Ventilation Mask
PADDING Technodown Synth 150gr



hiTEX

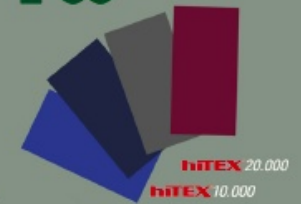
Ispirato agli anni '90, Finland rappresenta il Fashion & Hi-Tech Italiano e Francese. Il tessuto Hitex ed il peso dell'imbottitura conferiscono al capo una protezione termica ottimale.



ELECTRICAL BLUE



BLUE NAVY



available in three different fabrics and customizable in all color combinations!



EBANY



GRANADE



BLACK



MILITARY



BLACK FORCE



RED

OSLO

TEX 1 Hitex Nylon (5.000 mm)
TEX 2 Lycra Borders
PLUS Ventilation Mask
PADDING Technodown Synth 150gr

 HIGHLY
WATERPROOF


hiTEX


 HIGHLY
WINDPROOF

 TOP UV
RESISTANCE

 VERY
BREATHABLE

 LIGHT
WEIGHT

 SNUG AND
COMFORT

 REALLY
EASY CARE

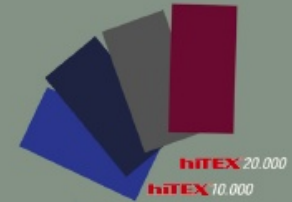
Ispirato agli anni '90, Oslo rappresenta il Fashion & Hi-Tech Italiano e Francese. Il tessuto Hitex ed il peso dell'imbottitura conferiscono al capo una protezione termica ottimale.



ELECTRICAL BLUE



BLUE NAVY



available in three
different fabrics and
customizable in all
color combinations!



EBONY



GRANADE



BLACK



MILITARY



BLACK FORCE



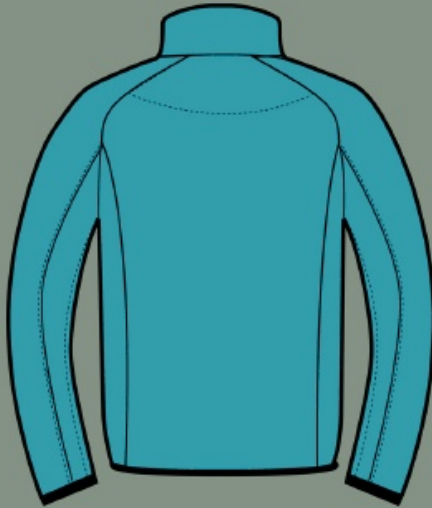
RED

NEBRASKA

TEX 1 Twintex Superstretch
LINING No lining
PADDING No padding

-  HIGHLY WATERPROOF
-  HIGHLY WINDPROOF
-  TOP UV RESISTANCE
-  VERY BREATHABLE
-  LIGHT WEIGHT
-  SNUG AND COMFORT

twintex
SUPERSTRETCH



ACQUAMARINE



BLUE NAVY



hiTEX 20.000
hiTEX 10.000

available in three different fabrics and customizable in all color combinations!



ROYAL BLUE



LIME



BLACK



RED

PRIME

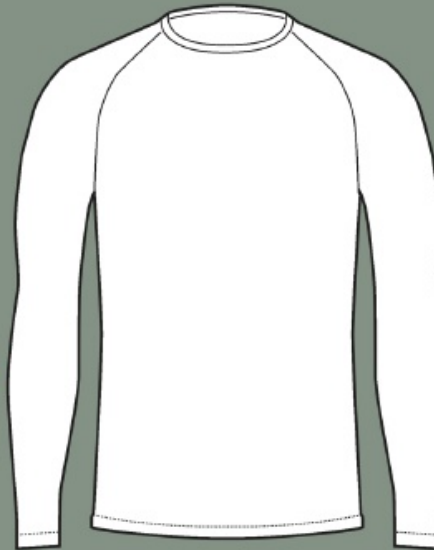
ECMPR01 (man)
ECWR01 (woman)

Maximum comfort thermal garment. Easy to work stretch technical fabric, ideal for protecting from the cold during snow activities. Reinforced details maximum adaptability to any body size.

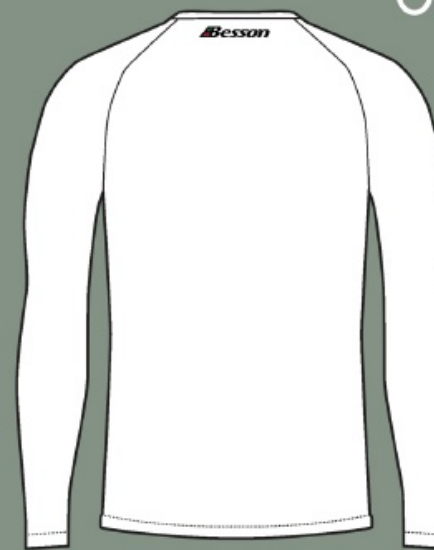
composition: 92% Pa 8% Ea, 240gr / mq
Breathable fabric.



available in three
different fabrics and
customizable in all
color combinations!



WHITE



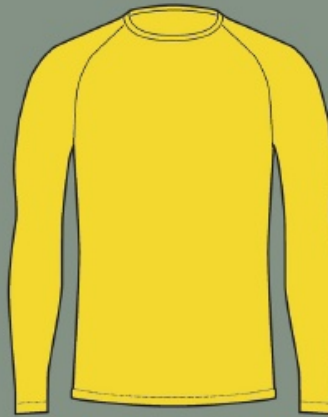
BLACK



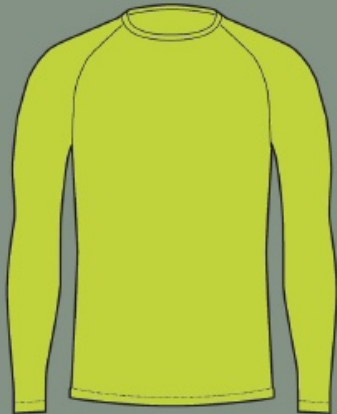
BLUE NAVY



ROYAL BLUE



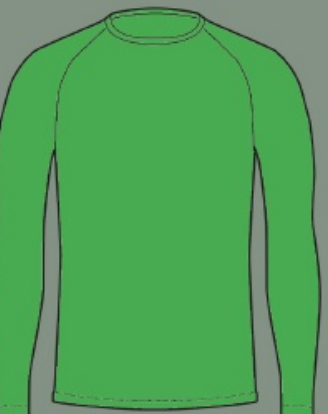
YELLOW



LIME



RED



GREEN

BETTER

ECMBR01 (man)
ECWBR01 (woman)

Maximum comfort thermal garment. Easy to work stretch technical fabric, ideal for protecting from the cold during snow activities. Reinforced details maximum adaptability to any body size.

composition: 92% Pa 8% Ea, 240gr / mq
Breathable fabric.





Besson

OLYMPIC CHAMPION PRO

TEST IN THE WIND TUNNEL

Besson
2022/23

www.anzibesson.it

AnziBesson reserves the right to make even small changes without notice in order to improve the offer to the public.

Some color variants may not be immediately available, for updates and ongoing promotions consult the site anzibesson.it.